

Core Governance

2026 - 2027



Our School Overview



About Us:

LCE Academy exists to provide high-quality, inclusive education for pupils who have experienced barriers to engagement in mainstream settings. The school operates a stage-not-age curriculum model, with strong emphasis on safeguarding, regulation, relational practice and preparation for positive next steps.

LCE Academy Overview:

- **School Name:** LCE Academy
- **Type of provision:** Independent specialist provision for pupils with Education, Health and Care Plans (EHCPs)
- **Primary area of need:** Social, Emotional and Mental Health (SEMH), often alongside co-occurring needs
- **Age range:** 11–16
- **Planned capacity:** 108
- **Local authority areas served:** Oldham, Rochdale, Tameside, Manchester, West Yorkshire, Bury and surrounding areas.

Vision, Values & Ethos

LCE Academy is underpinned by the core values of:

- **Respect** Promoting dignity, safety and positive relationships
- **Resilience** Supporting pupils to recover from challenge and persist with learning
- **Integrity** Fostering honesty, responsibility and accountability

Our relational approach ensures pupils are regulated and secure, creating the foundation they need to take on challenging learning pathways and prepare for successful next steps.

Important Note



This Core Governance Policy provides the overarching framework for leadership, accountability and oversight at LCE Academy. It should be read alongside the school's safeguarding, SEND, behaviour, complaints and admissions policies, which together ensure compliance with the Independent School Standards and statutory guidance.

Address **Unit 4, Howarth Court Oldham
Broadway Business Park.**

Phone **07446417002**

Table of Contents

About the Policy

🔗 Our School Overview	02
🔗 Vision, Values & Ethos	03

01	Governance Structure	05
	1.1 Governing Team	06
	1.2 School Leadership Structure	06

02	Leadership & Management Structure	07
	2.1 Senior Leadership Team	08
	2.2 Safeguarding Leadership	08

03	Accountability & Quality Assurance	09
	3.1 Governance Diagram	10
	3.2 Quality Assurance & Continuous Improvement	11

04	Compliance & Policy Framework	12
	4.1 Compliance and Policy Framework	13
	4.2 Information Provision	13

01

Governance Structure



1.1 Governing Team

The governing team provides strategic oversight, challenge and support, with particular focus on safeguarding, SEND effectiveness, leadership development, staff wellbeing and statutory compliance.

Krystian Liptrot	Proprietor
Mark Giles	Chair of Governors and Director of Educational Consultancy
Jill Williams	Director of SEND (Life Changing Education)
Jim Liptrot	Director
Paul Wood	Strategic Leadership and Wellbeing Lead
David Millar	Leadership Development Mentor

1.2 School Leadership Structure

The Headteacher is accountable to the Proprietor for the day-to-day leadership, operational management, safeguarding and quality assurance of the school.

Sam Gray	Headteacher -
David Jeal	Deputy Headteacher
Lindsey Drews	Assistant Headteacher and SENDCo

02

Leadership & Management Structure



2.1 Senior Leadership Team



Sam Gray

Headteacher - Overall responsibility for leadership, safeguarding, quality assurance and compliance

Lindsey Drews

Assistant Headteacher - Operational leadership, curriculum and teaching and learning



David Jeal

Deputy Headteacher (SENDCo): SEND provision, EHCP implementation and pupil outcomes

2.2 Safeguarding Leadership

- The Headteacher acts as Designated Safeguarding Lead (DSL)
- Deputy DSLs are appointed from senior and pastoral staff
- Safeguarding practice is monitored daily and reported termly to the Governing Body

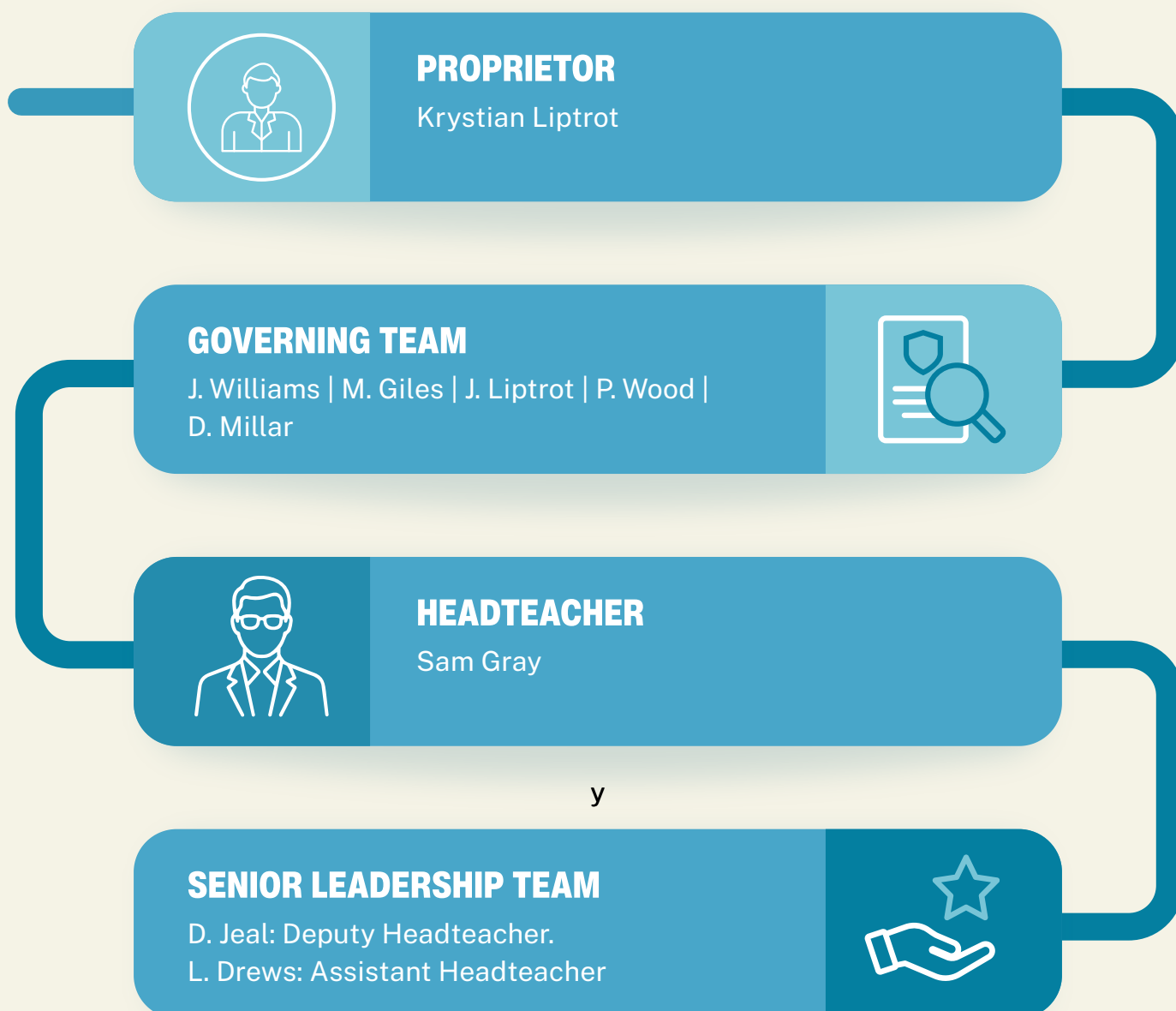
03

Accountability & Quality Assurance



3.1 GOVERNANCE DIAGRAM

The diagram below outlines the leadership structure and reporting lines from the Proprietor to the Senior Leadership Team.



LCE Academy operates a clear governance structure that ensures effective leadership, accountability and oversight across the school.

3.2 Quality Assurance & Continuous Improvement

LCE Academy operates clear and structured systems for monitoring, evaluation and ongoing improvement. These processes ensure that the quality of education, safeguarding arrangements and pupil outcomes are regularly reviewed and strengthened. Key mechanisms include:

- A published policy review cycle
- Termly safeguarding, attendance and behaviour analysis
- SEND provision review and EHCP monitoring
- Staff supervision and professional development
- School Development Planning aligned to identified priorities

Quality assurance activity is proportionate, evidence-informed and focused on improving outcomes for pupils.





04

Compliance & Policy Framework

4.1 Compliance and Policy Framework

LCE Academy maintains a comprehensive suite of policies aligned to Independent School Standards Parts 1–8, including:

- Curriculum
 - Behaviour
 - Safeguarding and Child Protection
 - Attendance and Engagement
 - SEND
 - Equality, Diversity and Accessibility
 - Complaints
 - Safer Recruitment
 - Health, Safety and Wellbeing
 - Online Safety and Acceptable Use
 - Positive Handling and Physical Intervention
-

4.2 Information Provision

The school ensures required information is made available to parents, carers and stakeholders through:

- **The school website**
- **Parent handbooks and induction materials**
- **Published policies and procedures**
- **Clear routes for communication and complaint**

Information is kept up to date and reviewed regularly to ensure accuracy, accessibility and compliance with regulatory requirements. This approach supports transparency and helps parents, carers and stakeholders remain informed about the school's provision and procedures.



CONCLUSION

LCE Academy is committed to maintaining strong and effective governance that supports the safety, wellbeing and educational progress of all pupils. Through clear leadership structures, defined responsibilities and regular oversight, the school ensures that its provision operates in line with statutory requirements and the Independent School Standards.

This policy reflects the Academy's commitment to accountability, transparency and continuous improvement. Governance arrangements are designed to provide appropriate challenge and support to school leaders, ensuring that high standards of safeguarding, education and professional practice are consistently maintained.

Contact Information

Phone 07446417002

Website lceacademy.co.uk

Email sam@lifechangingeducation.uk

Social Media @lifechangingeducation

Address Unit 4, Howarth Court
Oldham Broadway
Business Park,
Lancashire, OL9